



April 2023

WATS Server 2023.1 Release Note



Major Feature Areas

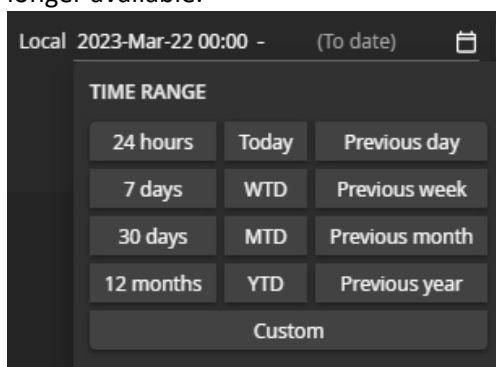
Dashboard improvements.....	3
Export wizard.....	4
Connection & execution	4
Repair (preview)	5
System manager improvements	7
System for Cross-domain Identity Management	9
REST API.....	9
Miscellaneous features	10
Bug fixes	11



Dashboard improvements

Several new features have been introduced to the dashboard:

- **Shared dashboards:** Previously a dashboard was either private, only available for the creator of the dashboard, or public, available for every user with permission to view dashboards. WATS 23.1 introduces the concept of shared dashboards, where a user can share their private dashboard with one or more users or roles. Two new categories are available in the dashboard menu displaying dashboard shared by the user and dashboards shared with the user. Sharing a dashboard with another user will give full access to modify the dashboard.
- **New date picker:** The new date picker, added in Reporting in 22.2, has now been added to the dashboard filter as well. Behavioral change: the old quick dates are no longer available.



- **New date options on widget filters:** Behavioral change: The option for choosing a time range in widgets is now called Period type. Period grouping, which was previously used for this, now determines the grouping of the data. For instance, if period grouping is set to month, each row in a grid will represent one month.

Also, more options are now available when setting a time range for the widget. Quick options present in the new date picker, like year to date or previous month is now also present in the widget.

- **Hide public dashboards in menu:** By default, any dashboard set to public by any user is displayed in the public dashboards list. As of 23.1 it is now possible to hide public dashboards which are not of interest on a per user basis.
- **Alphabetical sorting of dashboards in menu:** Previously dashboards were sorted by the date of their creation. As of 23.1 the list is now sorted alphabetically by name.

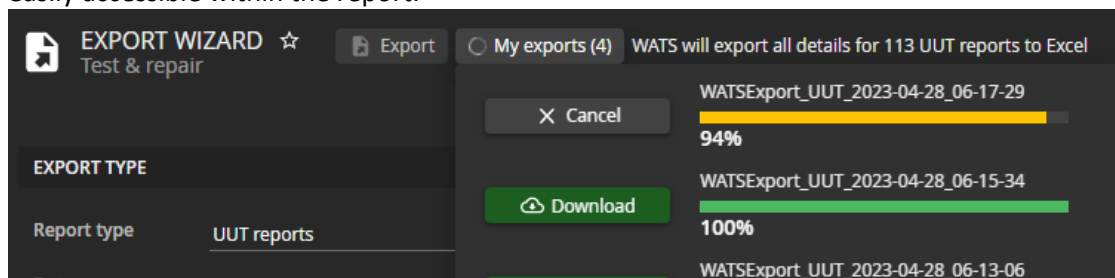


- **Expand/collapse dashboard groups in the menu:** The different groups of dashboards (private, shared by me, shared with me and public) can now be collapsed to allocate more screen real estate to other groups.

Export wizard

The Export wizard has been rewritten into a newer framework. This rework also brings along a few new features:

- **Current exports overview:** A users ongoing and recently completed exports is now easily accessible within the report.



- **Export as WSJF (JSON):** When exporting UUT or UUR data WSJF is now available as format.
- **Export Sequence calls:** When exporting selected steps Sequence call step types can be selected and will be included.
- **New details options:** Excel and Text exports can include Asset info, Run number, Numeric format, and Step time. Certificate exports can include XY graphs and Finalized UTC and turn off page numbering.

Disk usage during export has been improved, so the “Out of disk space” error should no longer happen.

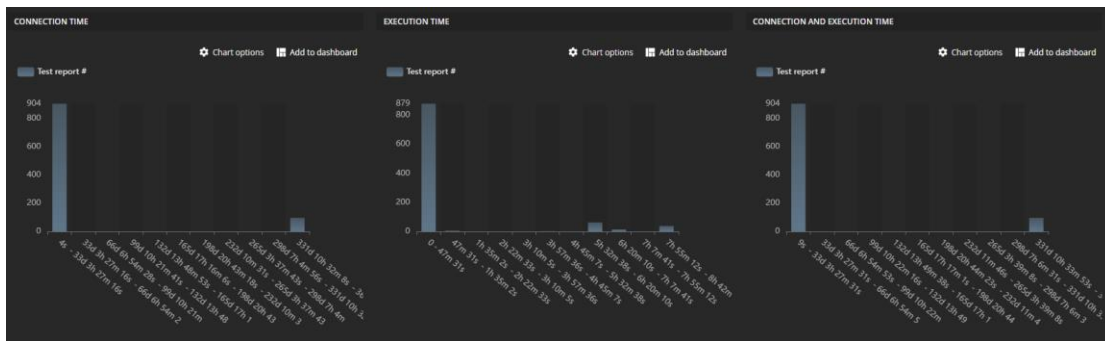
Connection & execution

Connection and execution time has been updated; it’s now given a new design and newer framework. The grid now functions like most of the reports in WATS. The grid can include/exclude columns, be exported and added to the dashboard.

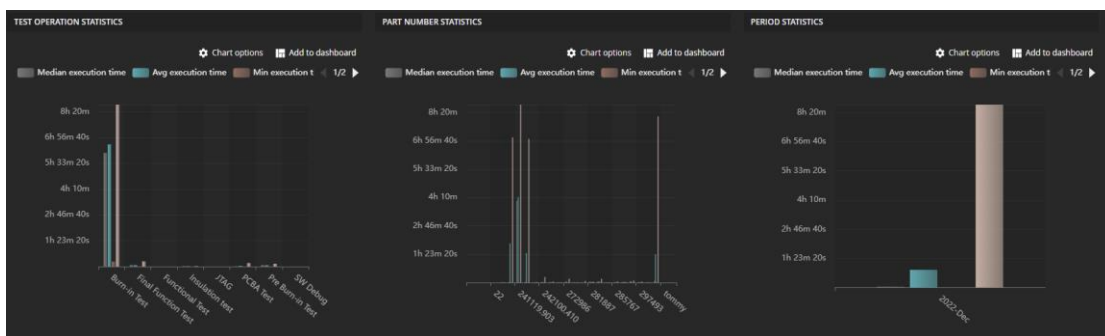
It is now possible to adjust zooming, and how the user wants to view the chart.

The rewritten report now includes charts. The first three charts display the number of reports in a certain time period for the selected chart.

- Connection time
- Execution time
- Connection and execution time

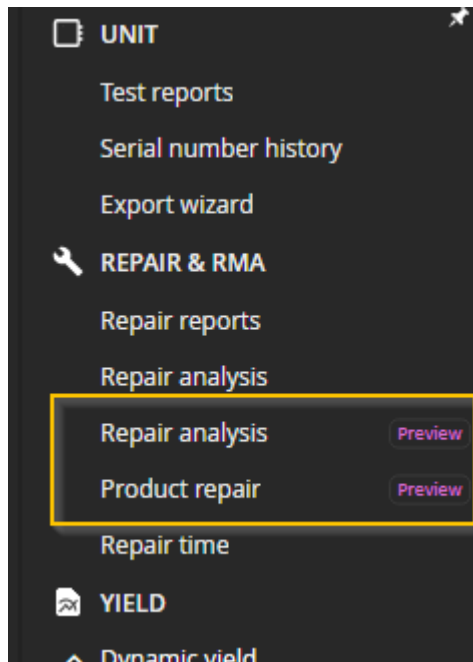


The last three charts focus on displaying connection and execution information for three dimensions: Test operation, Part number and Period.



Repair (preview)

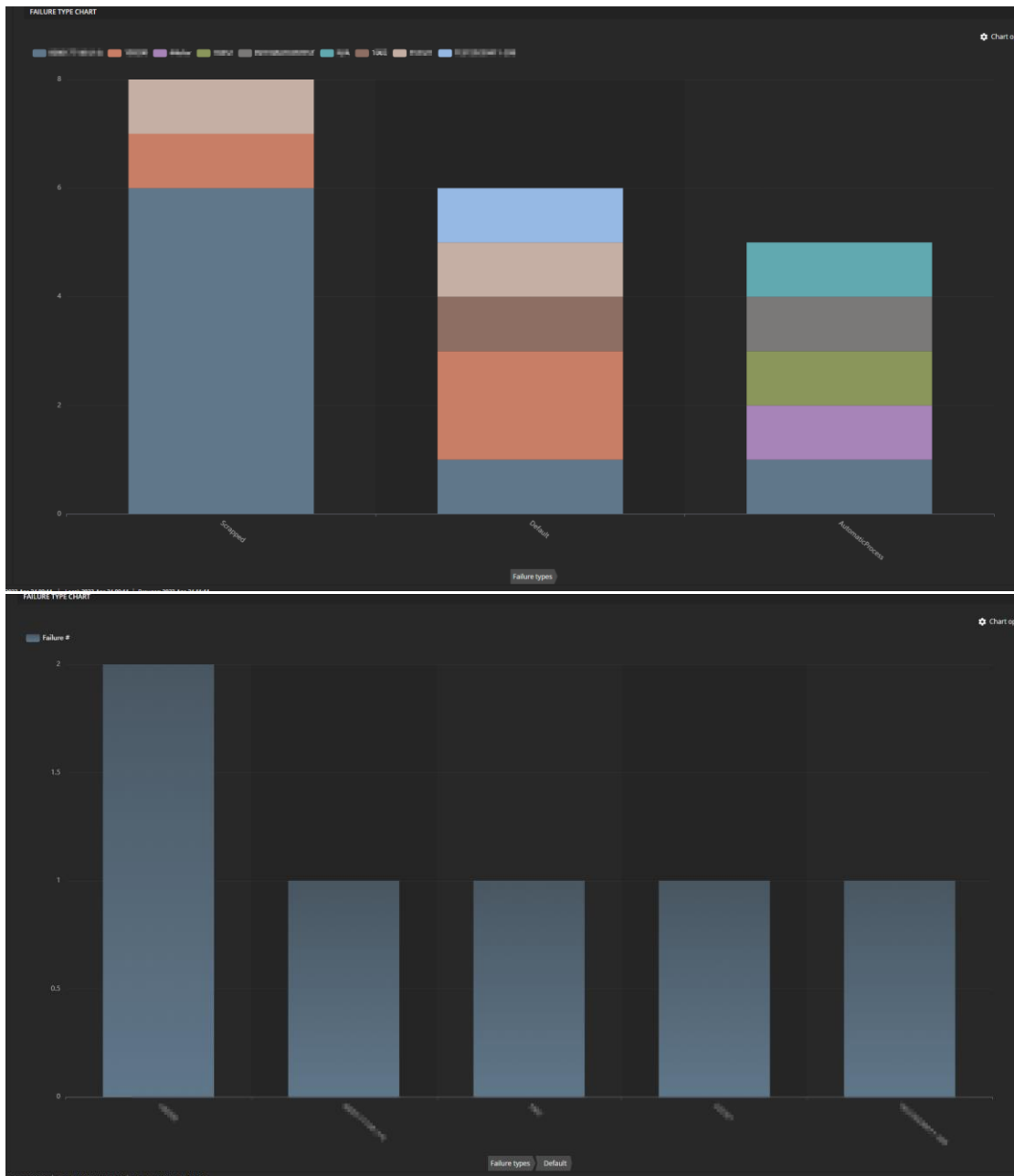
Repair has been given a rework, with **Repair analysis** now being more like the Dynamic Yield report in the sense that changing column order and hiding/showing columns will now trigger loading of aggregated data to give the user the ability to look at very specific datasets.



There is also an entirely new report named **Product repair** which has multiple charts to give an easy overview as to which part numbers are failing the certain test operations, repair operations and which failure types are the most common.

The failure by repair operation, failure by test operation and failure type chart are stacked bar charts which can drill down into a selected test operation/repair operation/failure type to view all part numbers included within the selected operation/type.

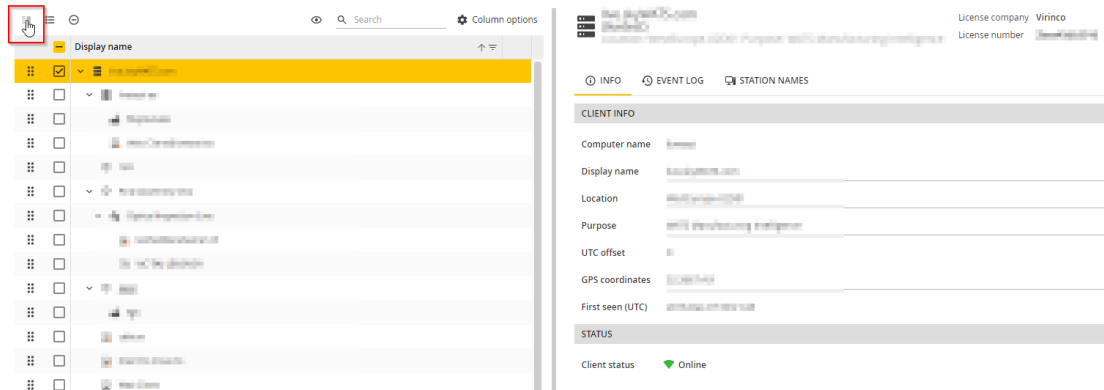
In the screenshots below, the stacked failure type chart (*picture 1*) is shown, showing all the different part numbers for the different failure types. When clicked, the chart will transform, showing the part numbers within the selected failure type in the chart (*picture 2*). The part numbers can further drill down to other reports.



Both reports are experimental, therefore they are only released as previews and may be reworked.

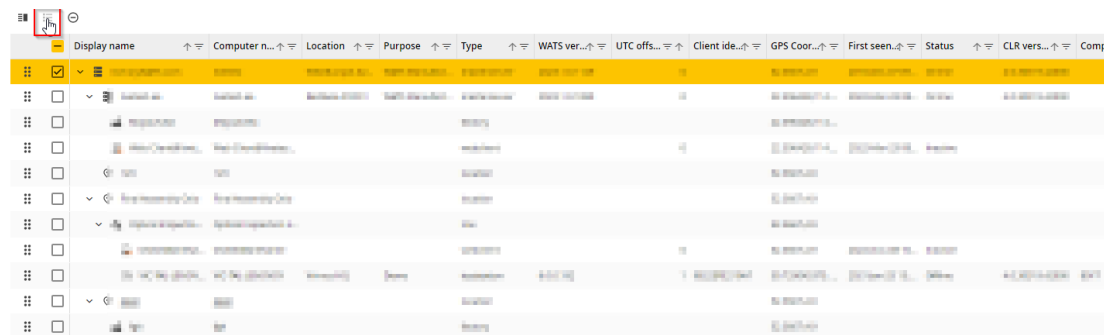
System manager improvements

System manager has been modernized and received several improvements. The most noticeable change is the level/client list which is now in a hierarchical grid with the options to sort, filter, hide/show columns, search and access a “more” menu on each row, giving the opportunity to easily remove clients/levels.



The hierarchical grid can be viewed in a “default view” (picture 1), showing the clients with limited information in the left pane and more detailed information in the right pane, or it can be viewed in a “list view” (picture 2) extending the grid to the entire page and showing more detailed information in the hierarchical grid. In the list view, more columns are available than in the default view.

If a row is double-clicked while in list-view, the default view will be triggered with the double-clicked row shown in the right-hand pane.



Drag and dropping has also been improved, no longer requiring the user to “unlock” moving of rows, but rather just click and drag (the icons to the left on the rows) to the desired place in the grid.

With the introduction of multi-selection in the hierarchical grid, removal of multiple clients/levels are possible. Simply select multiple clients/levels by checking the left-hand checkbox, then press the “remove” button located above the grid.

Moving a client will prompt a dialog, making the user decide either to move the client while keeping all its history (UUT and UUR reports) or to move the client without keeping its history. Keeping the history means that users with restricted access to the level will see all historical reports from that client.



System for Cross-domain Identity Management

System for Cross-domain Identity Management, SCIM for short, is a specification made to provide easier provisioning for users, and WATS now supports it! Through a new addition to the REST API, WATS administrators can now set up automated provisioning from Azure to automatically create new user accounts, update existing user accounts details, or disable and delete accounts. For more information, please visit our Zendesk article about [WATS Provisioning](#).

REST API

- Support Product Group restrictions in Report Query.
- Export attachment RestAPI.
- Make Unit verification report available through RestAPI.



Miscellaneous features

General

- Welcome page for new users: new users will be met with a welcome page when entering WATS for the first time, with options for selecting a few basic settings like language and color theme for the WATS application.
- Help link to client documentation added to the help menu.
- TestStand icons updated to version 2022.

Reporting

- Repair reports: new column in grid displaying the number of attachments for a given UUR report.
- GR&R analysis: multiple software files can be analyzed together.
- Improved multiple grid header tooltips to better explain what the column means.
- OEE analysis, behavioral change: Target input change to Target by hour. Input is now in hours, same as available time.
- OEE analysis: hours per day now supports decimal numbers (fraction of hour).
- UUT report & UUR report: Reports can now be downloaded as WSJF (JSON).

Control panel

- Product groups: Has been given a fresh look and minor updates
- Alarms & notifications: when filtering on part number or station the rule will now suggest products and stations, much in the same way as the Reporting filter.
- Processes: Vendor list can now be updated from the GUI.
- Product manager: BOM lists can now be uploaded from the Product manager GUI.
- Product manager: new function block and quantity columns in BOM list.
- Product manager: Behavioral change when syncing products with report data. Pre 23.1 products were synced, and a summary was given on updates made to products. From 23.1 the user performing a sync will be presented with a list of the changes before they are made. This enables the user to exclude irrelevant products.
- Production manager: new *Overwrite never* and *Overwrite on new package version* attribute for software files.
- Roles & permissions: Added ability to reset standard roles back to their default set of permissions.



Bug fixes

Bug fixes in this list is a summary of items since the last Server release. Most items have already been deployed to cloud accounts through periodic maintenance.

- Dashboard - Product and test yield grid - Unit # column is selectable even though it's fixed.
- Dashboard - Yield grids - yield summary not showing if belonging count column is not visible.
- Dashboard - Pdf export may contain widgets that are not fully rendered.
- Serial number history may open wrong report type for part info report types.
- Processes - unable to save process upon editing.
- Dashboard - Dynamic grid sort option gets reset.
- Don't throw error when unit phase flag combo does not have name.
- Failed exports don't delete temporary files from disk.
- Attachment export fails with zero-length attachment.
- UUT StationInfo additional data includes siblings in path/key.
- Subscribe Others to a dashboard and choose yourself.
- LastActivity column in Users grid displays as 'Invalid date' in Firefox.
- Unit Consistof error when Revision Mask is in use.
- Removing and adding the same file to a software package stops server to server sync.
- Dashboard - Missing labels on cost analysis chart.
- UUT report does not handle \$ numeric formatting flag.
- Delete reports - Report marked for delete icon display latency.
- Dashboard - open details from widget provides wrong time range.
- Unique process name check is case sensitive.
- Remove unnecessary convert to UTC from Report Query rest API.
- Unable To See Full Operation Names in multi select.
- Manual inspection: confirming a step very fast after typing a value might not register the input.
- Dashboard - Dynamic yield chart settings editor - column names overflow.
- Dashboard - Rolled throughput yield chart - wrong value in test operation FPY tooltip.
- Dashboard - Periodic Yield widget missing filter options.
- Verify that filters in widget correspond to filters in the reports.
- Add latest client version to hotfix.
- Reporting - Get measurement data may throw exception in some rare cases.
- Reporting - UUR failed step report may not include all data.
- Processes - Column widths not scaling.
- Update - all yield reports (except Dynamic) to use fixed sorting (and order)
- Quarantined UUR report with empty attachment.
- Repair is not working with UUT reports which has report code 0.
- Dynamic yield - Rows with step caused uut failure dimensions are repeated.
- Analyzer role with access to dashboard menu/module cannot make private dashboard.
- Updated Deleted processes to Inactive.
- Legacy - Add user doesn't work.
- WATS dashboard widgets not updating properly.



- Wats filter auto complete - opening the list by clicking still filters list based on input value.
- Clone process does not create new GUID for repair codes.
- Reporting - GR&R doesn't include station name and max units filter.
- Dashboard - When drill down from widgets to reporting, filter options are not applied.
- Drilldown twice from same drill down option does not work.
- UUR report with empty attachment fails in WSJF conversion.
- GRR - Excluded Reports are not correctly excluded when generating step grid + rename "Max units".
- UUR report with empty (zerolength) attachment fails in View UUR Report to "Max reports".
- Drilldown from widgets provides wrong date.
- Add UTC first/last seen as columns in Dynamic yield.
- Dynamic Yield - add all templates as pre-created views for all new users.
- Reduce 'High number of converter errors' message threshold from 100 to 10.
- Reporting - OEE analysis includes too many days if you have a positive local time zone offset.
- Reporting - Dynamic yield may display wrong data when the "misc info value" column is added.
- Production manager: Show changes to sw packages in Change log.
- Reporting - Unable to sort Process Capability Analysis grid by step name.
- Filter - semicolon is added in misc description text field when tab is clicked even though multiple values is not supported.
- Creating a new user just after its deletion (with the same username) throws an error.
- Reporting - Style issue in the calendar popup when you specify a custom date range.
- UUT report: unable to print more than one page of the UUT report.
- UUT Certificate Export writes numeric format instead of formatting the value.
- Add latest client version to hotfix.
- Report from POST WSJF has no steps.
- Dashboard does not update on quick date button clicks.
- Dashboard - New widgets should use Dashboard filter+ setting gets override.
- Multi-select closes automatically when navigating to the bottom of the list using keyboard.
- Dashboard - Dynamic yield grid matrix sorting gives undefined query string.
- Dashboard - Support Local time (show time as) in custom filter
- Error in loading and saving My settings.
- Alarms and notification - Add support for cooldown and stop trigger (asset, SN Handler)
- Dashboard - Error message shown when editing widget settings.
- GR&R - Calculate button disabled if you tab out of the limit text box in the details view.
- GR&R - Unable to generate report for appraiser type Station name / socket.
- General - German system language is not working.
- Yield report - Order is sometimes wrong at first time apply.
- Local time label is not correct when drilling down from dashboard.
- Take in Serial Number Handler has wrong date in filename of resulting file.



- Dashboard: run filter option missing from Step UUT fail chart widget
- Some properties are missing from the filter for Test reports dashboard widget.
- Date picker - typing in the time field of custom date clears date field value.
- Dashboard autosaves widget filter.

Virinco AS, Grønland 1, 3045 Drammen, Norway.

virinco@virinco.com | www.virinco.com

Copyright © 2023 Virinco AS | All rights reserved