



August 2020

---

**WATS Server 2020.2 Release Note**



## Major Feature Areas

Alarms and Notifications .....	3
Reporting smart filter .....	4
Test Reports improvements .....	4
Product groups - Unassociated part numbers .....	5
New Dashboard module – In Preview .....	6
Station Map .....	7
System Manager improvements .....	9
New Account page (Cloud) .....	9
Security - Azure AD .....	10
New Database Sync .....	11
Rest API: Post WSXF and Post WSJF .....	12
Miscellaneous features .....	12
Bug fixes .....	13



# Alarms and Notifications

The trigger module has been revamped and renamed to Alarms and notifications. When creating a rule for an alarm, the rule type can be of either Reports or Yield & volume. The first is much the same module as the old trigger, operating on conditions met for UUT reports. A Yield and volume rule, on the other hand, can provide a high-level overview of changes in both yield and volume, optionally filtered on multiple parameters, including product group, level, or process.

In addition, the Alarms and notifications module has several minor improvements over the old Trigger module:

- Reports rule now support automatic disabling (make rule inactive after x number of executions)
- Ability to clone (copy) an existing rule.
- The standard grid toolbar has been added both to the rule list and the log, enabling features like exporting to Excel and choosing visible columns.

☰ RULES  
Edit rule
Save Cancel

---

**INFO**

Name	TestYield decreased by 5% on any SW Filename	Last executed	2020-Aug-14 00:00:16
Description	Demo	Created on	2020-Aug-13 06:09:12
Type	Yield & volume	Created by	admin
Period grouping	Days		
Number of periods	7		

---

**CONDITIONS**

For rule to execute, the following condition must be met:

Test Yield Decreased By (%) 5 %
X Remove

Add condition

+ AND
+ OR

---

**FILTER**

For rule to execute, the following condition must be met:

SW Filename Contains  %
X Remove

Add condition

+ AND
+ OR



## Reporting smart filter

The part number and station field in the Reporting filter will now suggest values when typing. For the part number field, the search includes product name, enabling the user to type a product name into the part number field, and have WATS translate the product name into the correct part number.

**TEST REPORTS**  
Test & repair

Product groups (Any) Test operations (Any)

Levels (Any) Status (Any)

Serial number Run

Part number  Misc info desc

Revision

Batch number

Station name

Top count 1000

Product name: LoRa TOF  
Part number: 1001015

Product name: LoRa 2.4  
Part number: OLC-140-C

## Test Reports improvements

Pie Chart improvements: Users can now toggle which Pie charts they would like to display relative to the chart data source.

PIE CHARTS

**STATUS**

- 16 Passed (53%)
- 13 Failed (43%)
- 1 Error (3%)

**TEST OPERATION**

- 24 SW Debug (80%)
- 2 Acoustical test (7%)
- 2 JTAG test (7%)
- 2 Finalize (7%)

**PART NUMBER**

- 8 WATS FAT (27%)
- 4 1234 (13%)
- 4 11 (13%)
- 3 FATPartNo (10%)
- 2 FATPartNo111 (7%)
- 2 100200 (7%)
- 1 810-00304 DuplexXL-EXPAND80 (3%)
- 1 abc123 (3%)
- 1 ABC123 (3%)
- 1 WATS API TEST (3%)

**BATCH NUMBER**

- 18 (empty) (60%)
- 8 BatchSerialNumber (8%)
- 4 BatchSN (13%)

**Chart options**

VISIBLE PIE CHARTS

- Status
- Test Operation
- Part Number
- Station Name
- Operator
- Location
- Product Name
- Revision
- Batch Number
- Purpose
- Sw Filename
- Sw Version
- Error Code
- Receive Count
- Test Socket Index
- Fixture Id
- Passed In Run



UUT

- Added support for TestStand UUT.AdditionalData and StationInfo.AdditionalData
- Improved view experience when viewing the UUT report in the mobile app on small screens.
- Show/Hide all step details is now separated into two (2) buttons; Expand All and Collapse All

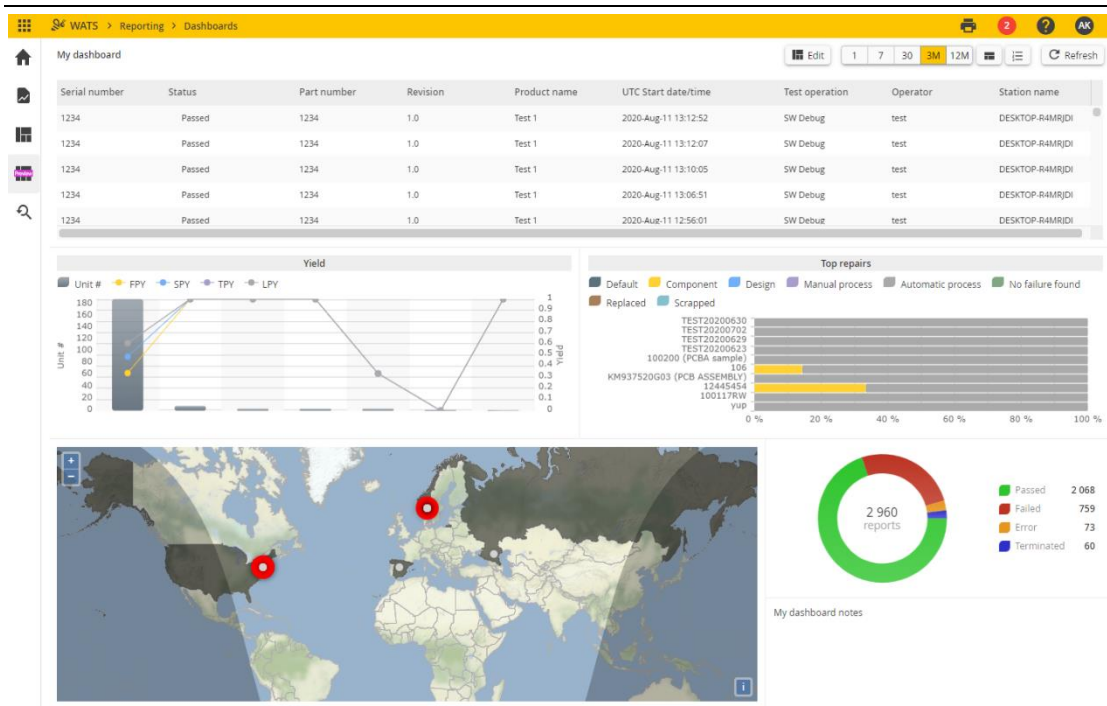
## Product groups- Unassociated part numbers

A new list view allows you to see Part Numbers that are not associated with any Product groups. Because of the flexibility in creating groups (wild cards, include/exclude, include group in group, etc.), the *Unassociated part numbers* will only list the Part Numbers and their last seen date. Assigning these items is performed in the standard *Product groups* menu.

PN	LastSeen
100200	7/27/2020 12:35:02 PM +00:00
123	7/27/2020 12:31:28 PM +00:00
123	7/2/2020 12:29:47 PM +00:00
22	8/3/2020 2:55:52 PM +02:00
241115.105	6/18/2020 1:21:00 AM +08:00
241115.1055C	6/16/2020 7:02:45 PM +08:00
241115.106	6/12/2020 2:26:44 AM +08:00
241115.200	6/13/2020 2:02:16 AM +08:00
241115.205	6/19/2020 7:35:25 AM +08:00
241119.105	6/12/2020 11:15:10 PM +08:00

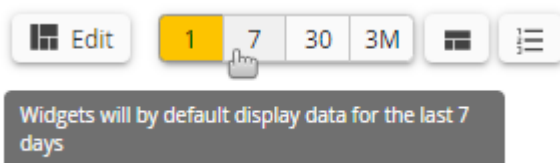


## New Dashboard module – In Preview



A new and modernized version of the dashboard is currently in development, and WATS 20.2 includes a preview version of this new module. The new dashboard contains several improvements over the old dashboard:

- Better support for different screen sizes: The new dashboard operates on a grid system, enabling the same number of widgets to be visible regardless of screen size
- Add to dashboard: Over the next versions of WATS most parts of the reporting module (as well as selected features from other modules) will be possible to add to a dashboard. This feature is available to test out in parts of the following modules in 20.2: Test reports, Yield report, and Station report, as well as the Alarms log grid from the Control panel. Grids and charts in these modules will now feature an Add to dashboard button, enabling adding it to an existing dashboard.
- Global filter: While widgets can still assign their own filters, much like in the old dashboard, the new dashboard also features the ability to assign time, level, and product group quickly as a filter for the whole dashboard. For instance, this enables the user to quickly switch between data for the last 24 hours or the last week. When adding widgets, these can be set up to either follow the global filter or override with their own settings.





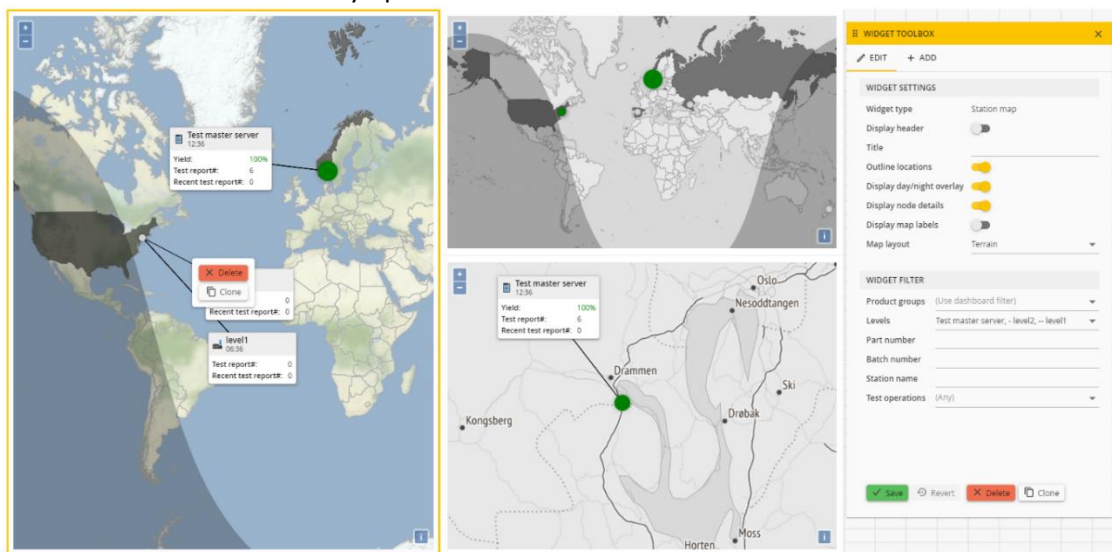
Note: multiple features are still to be introduced in the upcoming versions of WATS, including the ability to subscribe to dashboards on email, full screen support, better scalability of widgets, add to new dashboard and many more widgets.

## Station Map

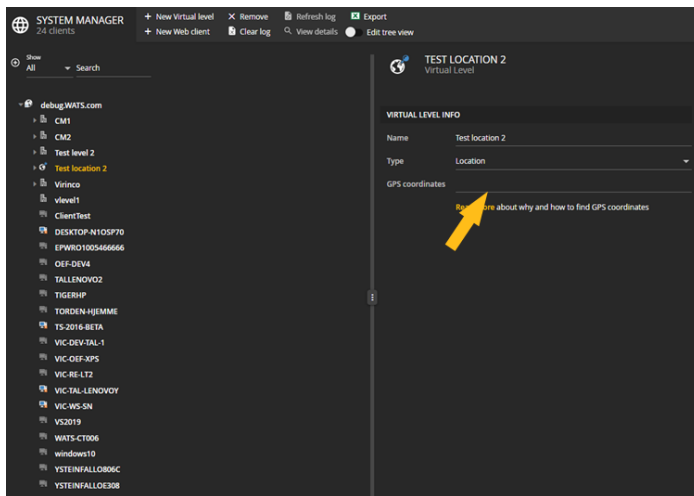
The station map has been changed from being a stand-alone Silverlight component to a HTML5-based widget inside the new dashboard. Each Station map widget has a set of settings and filter-options which allow the user to display **Virtual levels** data.

It uses GPS coordinates to automatically plot the stations on the map, which additionally gives you a graphical indication of their current health status and the number of Test/ Repair reports transferred or received. It also includes statistical information; number of test reports created last 24 hours, 7 days, current month, current year and total, as well as First Pass Yield and test volume charts that contain figures for the last 24 hours.

The statistics are continuously updated with the latest data.



Each node in the map represent a virtual level, which can be configured in the system manager (Control panel).



**Station map settings**

- **Outline location**  
Outlines countries that have one or more virtual levels in it
- **Day/Night overlay**  
Renders an overlay that display time of day of location
- **Node details**  
Renders an overlay box for containing information on the virtual level for each node
- **Map labels**  
Renders location name labels on the map
- **Layout**  
Determined the map style, select between Light or Terrain

**Features**

- Node details positions is saved automatically for each user
- Zoom factor and view position saves automatically for each user





## System Manager improvements

---

- Display converters and versions installed with the client\*
- Display TestStand and LabVIEW WATS add-on status\*
- Update Client Location and Purpose from system manager\*
- Station Event Log now contains the complete wats.log file sent from the client\*
- Virtual Level GPS coordinates (to display Levels in the new Station Map)

\*Requires WATS Client version 6.0 or higher.

## New Account page (Cloud)

---

The Account page has been re-worked for cloud customers, moving managing users to a new page 'users' located in the control panel. Primary contacts and/or users with the Account permission can access the new Account page, which contains the following tabs:

### Overview

Contains server information such as POD name, number of users and clients. Also displays a list of recent articles.

ACCOUNT OVERVIEW	RECENT RELEASE ARTICLES
POD: 04d02	MAINTENANCE ARTICLES
Registered users 73	Maintenance, Week 32 <a href="#">🔗</a>
Connected clients: 15	Maintenance, Week 27 <a href="#">🔗</a>
	Maintenance, Week 23 <a href="#">🔗</a>
	CLIENT ARTICLES
	WATS Client - Version: 6.0.155 - BETA <a href="#">🔗</a>
	WATS Client - Version: 5.1.144 <a href="#">🔗</a>
	SERVER ARTICLES
	WATS Server release 2020.1 <a href="#">🔗</a>
	WATS Server release 2019.2 <a href="#">🔗</a>

### Plan

This tab only applies for accounts running the new cloud pricing structure and contain information related to your subscription and storage usage



### SUBSCRIPTION INFORMATION

Plan: Enterprise

Storage plan (MB): 100

Users: 0

Your account is managed. To make changes to your account please contact [Sales@Virinco.com](mailto:Sales@Virinco.com)

### SUBSCRIPTION PLANS

Available plans: [Explore subscription plans](#)

Available storage plans (MB): [Explore storage plans](#)

### MONTHLY STORAGE USAGE (MB)

Month	Storage Usage (MB)
2020-01	320
2020-02	80
2020-03	0
2020-04	10
2020-05	10
2020-06	550
2020-07	10
2020-08	100

## Security - Azure AD

Contains settings related to the cloud instance, such as password security level and authentication options

### AUTHENTICATION

**WATS AUTHENTICATION**  
Default WATS authentication (username/password)

**AZURE AD AUTHENTICATION**  
Microsoft Azure AD authentication

### WATS AUTHENTICATION PASSWORD LEVEL

Determines password strength for all users

Level: **Medium**

- Must be at least 8 characters
- Must be different from user name
- 5 login attempts within a 5 minute period

### Azure AD

WATS now support Azure AD authentication. To set it up, click “Azure Ad Authentication” and follow the wizard.

### Branding

Contains branding-related settings i.e. company logo.



COMPANY LOGO

Logo attached to WATS reports



Upload Image

## New Database Sync

---

Synchronizing data between a master server and local/regional servers are now done by our own synchronization system, instead of SQL Replication. The new database sync supports synchronizing:

- Test & repair reports
- Clients
- Processes
- Public product groups
- Products (Part numbers)
- Units
- Software packages
- Test sequences
- Workflows
- Tags
- Operator messages and their translations.
- Process and phase changes for units.

If the data synchronization is failing at any point, if it has stopped or the servers are no longer able to establish a connection to each other, users with the Notification System permission 'Sites and Clients' will receive a notification in WATS.

Requirements:

- Multiple WATS servers, either on prem, private cloud or both.
- Servers must be able to reach each other via HTTP or HTTPS.



## Rest API: Post WSXF and Post WSJF

Two new ways of sending reports to WATS via the Rest API

- Post WSXF (POST api/Report/WSXF)
- Post WSJF (POST api/Report/WSJF)

How to use Post WSXF: <https://virinco.zendesk.com/hc/en-us/articles/360013383500>

How to use Post WSJF: <https://virinco.zendesk.com/hc/en-us/articles/360014879119>

Using these methods requires the Rest API permission 'Post reports'.

## Miscellaneous features

- **Repair reports:** It is now possible to delete UUR reports, the same way as deleting test reports. Access to delete a report is contingent on the user role having the required permission.
- **Test reports:** When selecting rows in delete mode, it is now possible to select one row, hold down the shift key, then select another row, in order to select all rows between.
- **Export Wizard:**
  - Uses same basic step grouping as Test step yield & analysis
  - Can export Sequence call steps
  - Added support for looped sequence calls
  - Improved resource usage
  - Improved UI feedback
- **WATS Spinner button:** When applying a filter, a new spinner button will illustrate the loading of data. You can now cancel the query and reapply a filter
- **GUI Performance improvements:** Performance improvements have been made for multiple parts of the WATS front end. For instance, the repair module has been rewritten from the ground up, with performance in mind.
- **Grid Summary:** The **Station** and **Yield** report grids have received a summary row at the bottom of the grid, displaying summary information. Yield is calculated based on the total sum.

Results: 2 Export data Column options Add to dashboard

Par...	Pro...	Tes...	Unit #	FPY #	FPY	FPY (trend)	SPY #	SPY	SPY (trend)	TPY #	TPY	LPY #	LPY
OLC-14...	Sigfox	PCBA (d...	261	199	76.2 %	↓ 2.0 %	231	88.5 %	↓ 0.5 %	246	94.3 %	260	99.6 %
OLC-14...	LoRa 2.4	PCBA (d...	158	107	67.7 %	↓ 7.1 %	144	91.1 %	↓ 2.9 %	152	96.2 %	156	98.7 %
2	2	1	419	306	73 %		375	89.5 %		398	95 %	416	99.3 %



## Bug fixes

---

Bug fixes in this list is a summary of items since the last Server release. Most items have already been deployed to cloud accounts through periodic maintenance.

- Reporting: Station data (UUT) does not show any data in the UUR report.
- Reporting: Undefined values listed in the result column in step details' grid.
- Minor bug fixes and stability improvements.
- Operator Interface: Repair / MI fails with code 500 due to issues with attachments.
- MES Manager: Adding relations sometimes fails and blocks new requests.
- Rest API: The wrong filename returned from the exports list
- Export wizard: Export may in some cases consume too much CPU resources
- Export wizard: Exported reports are missing Start UTC when only Start is specified in the report
- Manual Inspection: The "media URL pdf" is downloaded for all steps containing the pdf reference
- Manual inspection: "Submit" sometimes trigger additional requests
- Operator Interface: Cannot delete Unsubmitted reports
- Product manager: Product import from CVS file fails if the part number contains a comma
- Rest API: To Date filter is ignored if seconds are specified other than 00
- Levels are not indented in reporting filter
- Asset manager: "Days since calibration" doesn't go up
- Production manager: Take MAC does not work
- Reporting: Splitter position sometimes wrong in filter manager
- Resubmit a report with a new GUID got stuck in quarantine
- Restricted users cannot open reports generated in OI before report has been processed
- OI do not load new submitted reports (UUR/UUT) in Serial number history
- Control Panel: Unable to delete users
- Export Wizard: Default from date is used if from date is empty when clicking export
- Step details: Max count issue on initial load
- Unit Consist Of - Text wrapping issue
- Yield by group - Duplication issue for products with multiple revisions
- Workflow Manager – Exception in copy workflow
- Excel chart data export is misalignment if longest series does not come first
- Redirect issue: Old layout still used for existing browser shortcuts
- Serial number history: User restrictions causes error
- UUR misc. info with empty input mask doesn't work
- Trigger: trigger processed multiple times in special cases
- Empty from date in TSA causing empty results
- Excel export has wrong date time format
- MailSettings - Send mail doesn't work if password is longer than 20 characters
- MI: UUR ExecutionTime uses UUT ExecutionTime
- Support manual asset id type in ClientToAsset sync



- Unit not passed after 5'th run triggers on passed reports on 5'th run
- Excel and text export includes status and reporttext on measurements twice
- Repair: Replace sub unit do not rendered new sub unit on initial creation
- Manual inspection: Set process step fails if production is not enabled in operator interface
- Control panel: Cannot update virtual level names
- Mes Manager: Pressing cancel when adding a new Test sequence relation still adds a relation to the database
- Reporting: Failed reports made in MI (without failures) has status "Passed" in grid
- Fixed an issue with the Exporting wizard
- Rolled throughput yield bug
- MI designer - Issue with reordering steps
- Reports quarantined if wrml contains MessagePopup with response=null
- MI/Repair submit does not update status and revision
- Create asset with automatic id fails if the two newest assets have same first seen date

**Virinco AS, Gråterudveien 20, 3036 Drammen, Norway.**

**virinco@virinco.com | www.virinco.com**

Copyright © 2020 Virinco AS | All rights reserved