



February 2020

WATS Server 2020.1 Release Note



Major Feature Areas

Renames	3
Test Reports.....	3
Repair reports.....	5
Yield report.....	6
Station report	8
Unit verification	10
Asset manager (public preview)	11
Misc features	11
Bug fixes	12



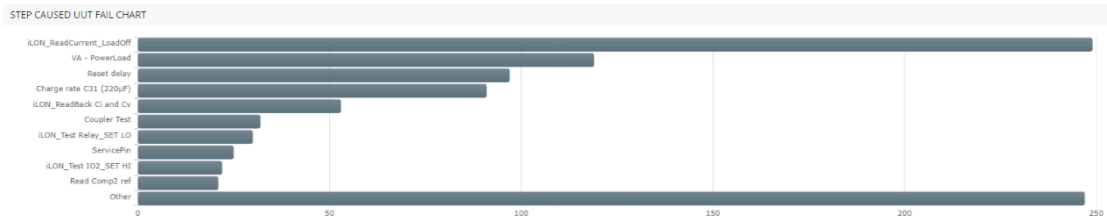
Renames

The menu items known as UUT and UUR report in now renamed to Test reports and Repair reports.

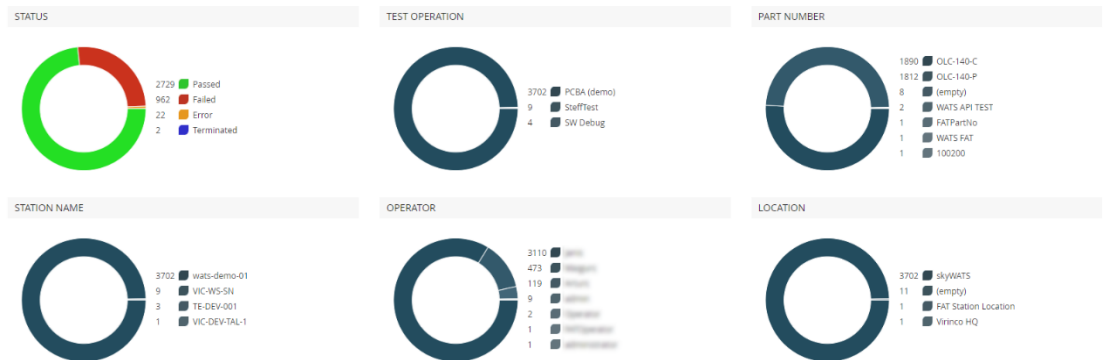
Test Reports

New charts

- A “step caused UUT fail” chart, showing the most failed steps was added



- Pie charts for a selection of columns in the Test reports grid.



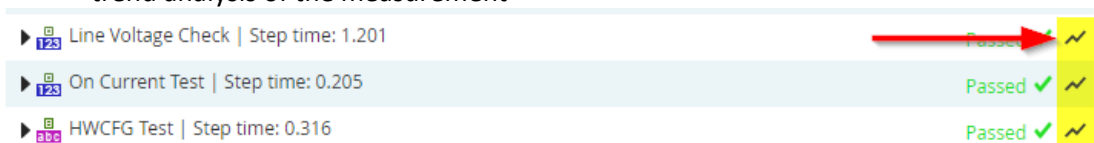
New columns

The following columns are added to the Test reports grid:

- Start date/time (local time)
- Test socket index
- Fixture ID
- Passed in Run
- Step caused UUT fail
- Step caused UUT fail path

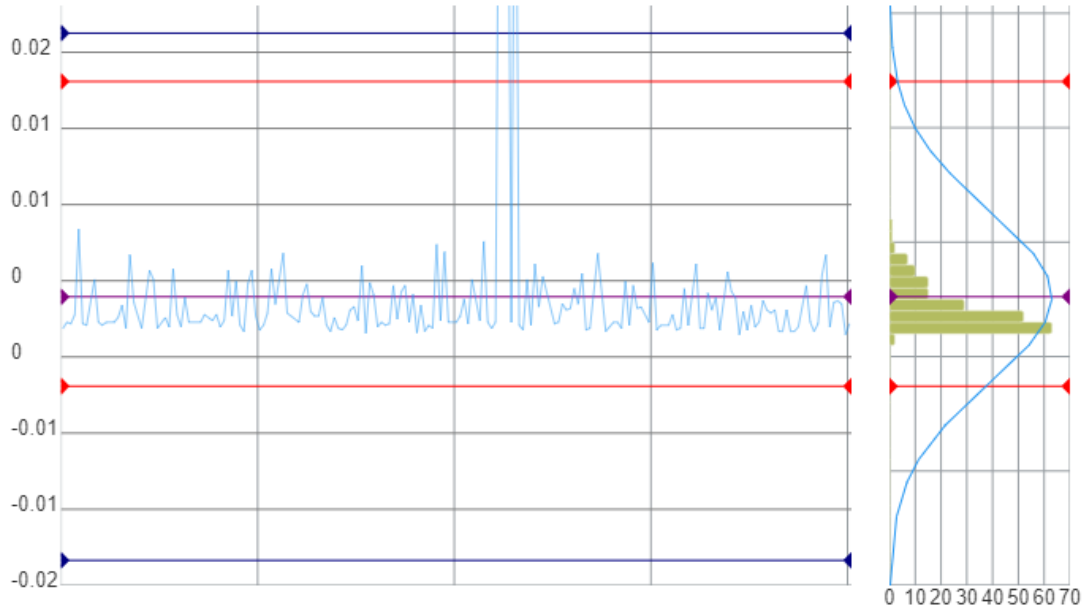
UUT report

- From the UUT report, you can now click on the line icon to drill directly into the trend analysis of the measurement





Drill into Test Step Yield & Analysis step details view:



- Improvements to display of additional results.

Old:

```

▼ MiscUUTResult
  ▼ UUT_Part_Info
    ▼ ArrayElementPrototype
      Part_Type:
      Part_Number:
      Part_Serial_Number:
      Part_Revision_Number:
    ▼ Value
      ▼ Prop
        Part_Type: SupUnit type 0
        Part_Number: SupUnit PN 0
        Part_Serial_Number: SupUnit SN 0
        Part_Revision_Number: SupUnit Rev 0
      ▼ Value
        ▼ Prop
          Part_Type: SupUnit type 1
          Part_Number: SupUnit PN 1
          Part_Serial_Number: SupUnit SN 1
          Part_Revision_Number: SupUnit Rev 1
    
```

New:



▼ MiscUUTResult	
UUT_Part_Info	
▼ [0]	
Part_Type	SupUnit type 0
Part_Number	SupUnit PN 0
Part_Serial_Number	SupUnit SN 0
Part_Revision_Number	SupUnit Rev 0
▼ [1]	
Part_Type	SupUnit type 1
Part_Number	SupUnit PN 1
Part_Serial_Number	SupUnit SN 1
Part_Revision_Number	SupUnit Rev 1

Repair reports

The Repair reports has been rewritten with a new modernized UI and lots of new features; like column chooser, column grouping and UUR preview.

Grid improvements

- The Repair reports grid is now virtualized which improve performance.
- It is now possible to reorder the columns.
- The user can toggle which grid columns to display in the “Column option” drop-down menu.
- The new grid support column grouping. This enables users to group grid data on column values.

New columns

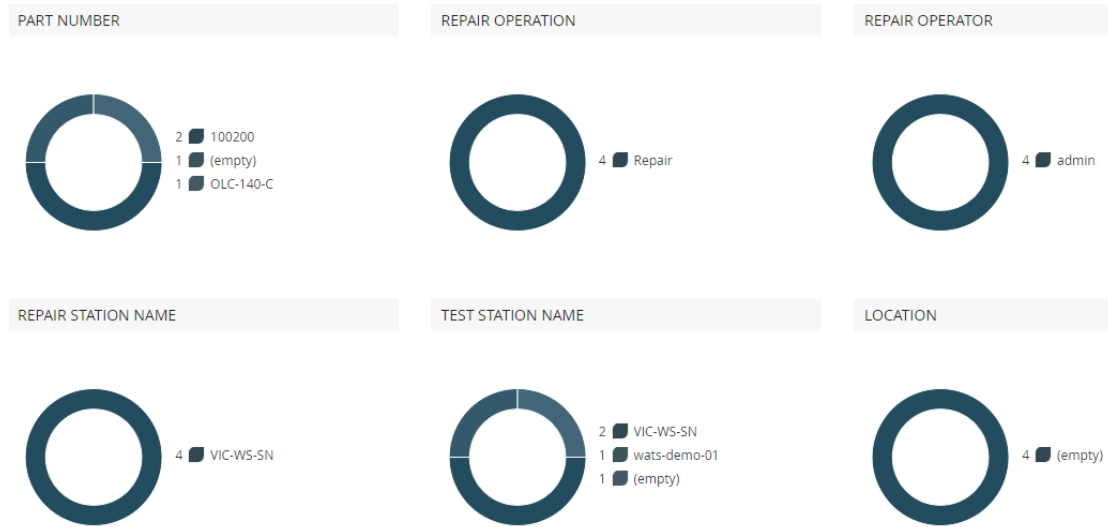
The following columns are added to the Repair reports grid:

- Repair code
- Test code
- Location
- Purpose
- Test location
- Test purpose
- Execution time
- UTC Finalized date/time
- Operator
- Test operator
- Comment



New chart

- Pie charts has been added for a selection of columns in the Repair reports grid.



Yield report

The yield report been rewritten with a new modernized UI. The grid table displays more data and the report has receive some new features.

General

- From date is now required in the filter
- Quick navigation: on the right side of the report, there is now a pane which acts as quick links to the different parts of the report. This can also be used to turn on and off different parts of the report.

Grid improvements

- The Yield report grid is now virtualized which improve performance.
- It is now possible to reorder the columns.
- The user can toggle which grid columns to display in the “Column option” drop-down menu.
- The new grid support column grouping. This enables users to group grid data on column values.

New columns

The following columns are added to the Yield report grid:

- Spy trend
- Tpy trend
- Lpy trend



New Yield per product group

A second grid has been added to the Yield report. This is similar to the existing grid, but displays yield per product group, instead of part number.

New charts

A yield chart has been added for both the yield and product group yield grids. Both charts will follow the sorting applied in the grid.



Station report

The Station report has been rewritten with a new modernized UI and some new features

The screenshot shows the 'STATION REPORT' interface. It includes filter sections for Product groups, Levels, Part number, Revision, SW filename, SW version, and Station name. There are also date filters for 'From date (UTC)' and 'To date (UTC)'. Below the filters are buttons for 'Apply filter', 'Clear filter', 'Share filter', and 'My filters'. The main area displays a table with 222 results. The table has columns for Station name, Location, Unit #, FPY #, FPY, Total test reports, Total passed test reports, and Test Yield. The FPY column shows percentages ranging from 87.3% to 98.6%.

Station name	Location	Unit #	FPY #	FPY	Total test reports	Total passed test reports	Test Yield
...	...	9 447	9 081	96.1 %	9 818	9 377	95.5 %
...	...	7 350	6 942	94.4 %	8 071	7 384	91.5 %
...	...	6 976	6 805	97.5 %	7 292	7 019	96.3 %
...	...	5 085	4 831	95.0 %	5 416	5 095	94.1 %
...	...	4 622	4 375	94.7 %	5 003	4 614	92.2 %
...	...	4 303	4 056	94.3 %	4 610	4 302	93.3 %
...	...	4 214	4 059	96.3 %	4 509	4 257	94.4 %
...	...	4 102	3 887	94.8 %	4 528	4 143	91.5 %
...	...	3 794	3 312	87.3 %	4 541	3 808	83.9 %
...	...	3 763	3 740	99.4 %	6 668	6 575	98.6 %
...	...	3 645	3 415	93.7 %	4 054	3 615	89.2 %
...	...	3 538	3 395	96.0 %	3 772	3 548	94.1 %
...	...	3 413	3 225	94.5 %	3 640	3 386	93.0 %
...	...	3 348	3 073	91.8 %	3 782	3 338	88.3 %

General

- The “Yield” filter option has been removed. New columns have been added to the grid to accommodate this.
- Quick navigation: on the right side of the report, there is now a pane which acts as quick links to the different parts of the report. This can also be used to turn on and off different parts of the report.
- Station report pop-up report now displays first-pass-yield.

Grid improvements

- The Station report grid is now virtualized which improve performance.
- The user can toggle which grid columns to display in the “Column option” drop-down menu.
- The new grid support column grouping. This enables users to group grid data on column values.



STATION REPORT
Station

Product groups (Any) Test operations (Any)
 Levels (Any) From date (UTC) * 2016-Jan-01 00
 Part number To date (UTC)
 Revision
 SW filename
 SW version
 Station name

Apply filter Clear filter Share filter My filters

Results: 5

Location	Station name	Location	Unit #	FPY #	FPY	Total test reports	Total passed test...
location: 2	VIC-WS-SN		6	3	50.0 %	9	6
	TE-DEV-001		1	1	100.0 %	2	2
location: FAT Station Location		1					
location: skyWATS		1					
location: Virinco HQ		1					

Export data Column options

GENERAL

- Reset columns
- Grouping
- Truncate

VISIBLE COLUMNS

- Station name
- Location
- Purpose
- Unit #
- FPY #
- FPY
- Total test reports
- Total passed test reports
- Test Yield
- SPY
- TPY
- LPY
- FPY PPM

Columns

The following columns are now available in the Station report grid:

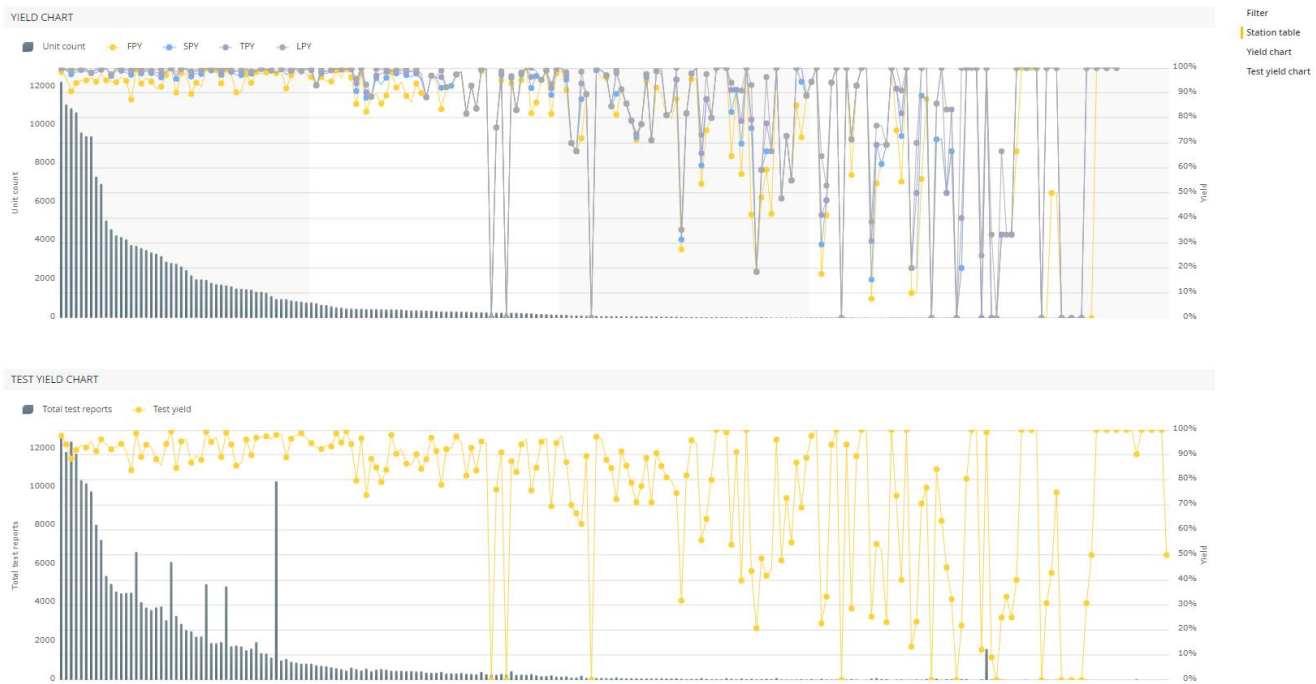
- **Station name**
The name of the station
- **Location**
The location of the station
- **Purpose**
The purpose of the station
- **Unit count (new, to accommodate removed yield filter option)**
Number of units related to this station
- **FPY count (new)**
Number of units that passed without any issues
- **FPY (new)**
Percentage for first pass yield
- **SPY (new)**
Percentage for second pass yield
- **TPY (new)**
Percentage for third pass yield



- **LPY (new)**
Percentage for last pass yield
- **FPY PPM (Changed from PPM)**
Fraction of tests that did not pass the first test, as part per million
- **Test reports # (new, to accommodate removed yield filter option)**
Total count of test reports combined for all units
- **Test yield # (new, to accommodate removed yield filter option)**
Number of Passed reports from the total test report count
- **Test yield (new, to accommodate removed yield filter option)**
yield in percent (Passed test reports # / Test reports #).

New charts

Interactive charts have been added to the Station reports (Yield / Test yield)



Unit verification

The unit verification feature in WATS Operator Interface has been updated with a new design and has updated unit grading rules.



UNIT VERIFICATION
1 test operations ● Include sub sites

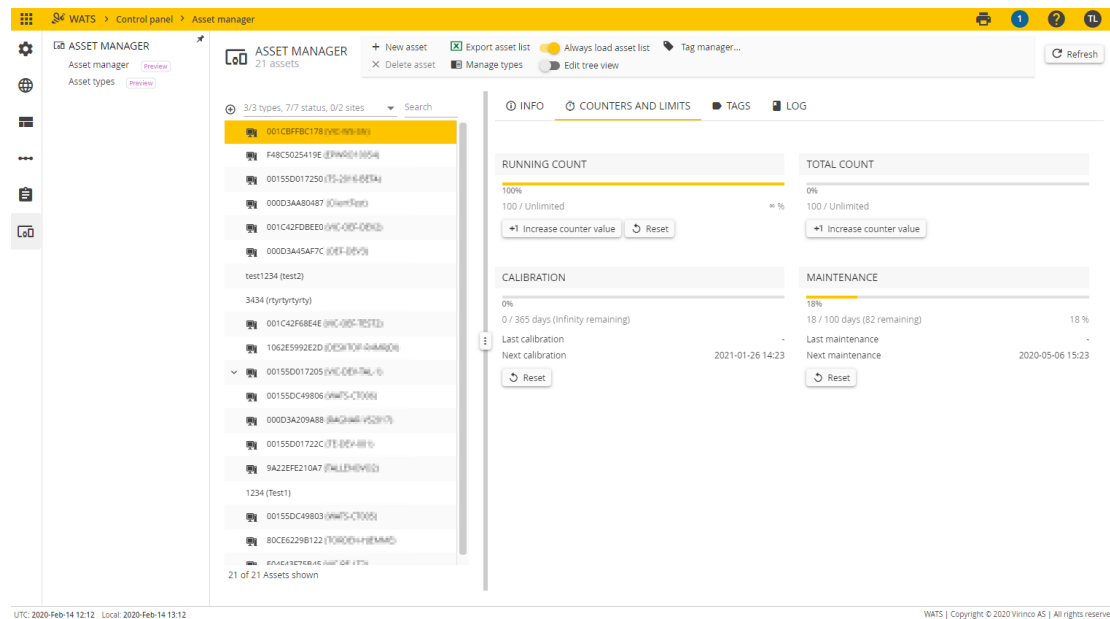
★★★★★ ✔ OK
GRADE A ALL PROCESSES HAVE PASSED THEIR TESTS, AND THEY HAVE BEEN EXECUTED IN CORRECT ORDER

Process	Process index	Status	Start (UTC)
SW Debug	0	Passed	2019-Aug-20 01:18:48

Asset manager (public preview)

A new Asset manager module has been released in a public preview. Manage the usage and location of WATS client machines and other test assets (Fixture, instruments, etc.).

- Define total usage and usage between maintenance of assets. Easily view assets which need maintenance or replacement.
- Usage counting through REST API and WATS Client API. Integrate into test sequences for automatic update on usage of assets.
- Define asset types to create shared rules for calibration intervals, warning thresholds and more.
- Log for changes made to an asset.



Misc features

- Product Manager – Support for user defined product categories.
- Support for Misc fields in Trigger filter (Contains, Does not contain).
- Most filter fields now support pasting tab or line shifted text (copy from Excel).



- Web camera no longer require configuration in Operator interface. Instead it will request access where it is used.
- Exported excel file from Export wizard has same name as the export zip file.
- Edit repair operation – Support for *Miscellaneous field* ordering.
- Columns / rows from Excel can now be copy-pasted into the new reporting filter
- Improved the *Step Caused UUT Failed/Error/Terminated* algorithm to better handle none-leaf Error and Terminated step status.

Bug fixes

- 7106 - Product Manager: Firefox redirects to error page after dropping a product onto the main product while boxbuilding
- 7563 - Future reports are accepted (quarantined), but return empty result to client
- 7705 - MES API: ProductCategory not populated in MES.Product.GetProduct
- 7770 - UUT report: Sub sequence step does not show sequence information
- 7773 - UUT report: Step start date/time not hidden on dynamically loaded steps when option is turned off
- 7818 - UUT report: Rendering fails when measurement name on multiple measurement steps are whitespace
- 7899 - Tokens: Settings can restrict to level equal to self (server)
- 7930 - UUT report: Comment is not returned in UUT list
- 7989 - Tokens: Restrict to public product groups only
- 7991 - Missing documentation for Yield report (WATS offline help)
- 8009 - UUT report: Crashes if execution time is NaN value
- 8012 - Step details: excel export fails if exporting steps resulting in non-unique Excel sheet names
- 8021 - Button overlays textbox in Sequence designer
- 8024 - Repair: 429 Too Many Requests errors occurring in Add Failures
- 8058 - MI: Verifies UUR misc info if sequence is failed but no failures are added in "optional" repair settings
- 8069 - MI: Failure comments does not always appear in report
- 8091 - Tokens: Internal server error when attempting to generate token with already used name
- 8177 - Report Query returns headers for deleted reports

Virinco AS, Gråterudveien 20, 3036 Drammen, Norway.

virinco@virinco.com | www.virinco.com

Copyright © 2020 Virinco AS | All rights reserved