



July 2014

**skyWATS 2014.2 Release Note
(WATS ver 4.2.6)**

Overview

This Release Note contains information about new features in WATS version 4.2.6 that are available in the skyWATS.com 2014.2 upgrade.

WATS is developed by Virinco and is offered as a cloud service through the brand skyWATS.com.

For more information, please visit www.skywats.com or www.virinco.com/WATS

Each skyWATS User is granted access to a User Level. Each User Level has access to different reports and functionalities. The current User Levels are **UUT Viewer, Repair Operator, Analyzer and Technician**.

For details, please see <http://skywats.com/product/compare>

Major Feature Areas

This document describes the following major feature areas of WATS 4.2.6:

- WATS Reporting
 - Email based summary report (BETA)
 - XYGraph MNL step chart layover/drilldown (BETA)
 - Open XYGraph step chart data in a editable view (UUT report)
- New module: Manual Inspection (BETA)
- WATS Operator Interface
 - Unsubmitted UUR Reports
- Miscellaneous
 - System sanity check
 - Information Center



WATS Reporting



Email based summary report (BETA)

The periodic summary report will automatically be sent by email to a WATS User(s). By default, it will be sent once a month (see email example below).

This version will have one standard template for the email. To receiving this email, login to you WATS account and select *Reporting > Email – Summary Report* and check the *Receive a monthly summary via email* box.

NOTE: The WATS user must have a valid email address registered. To update, browse to My Settings after login or edit Users in the Control Panel (requires privileges).

Virinco plan to extend the functionality to allow individual WATS filters per report, different time schedules (e.g. once a day) and also different templates depending on the details you would like to see in the report. To provide direct feedback to Virinco regarding this topic, please browse to

<https://virinco.zendesk.com/entries/52987167>

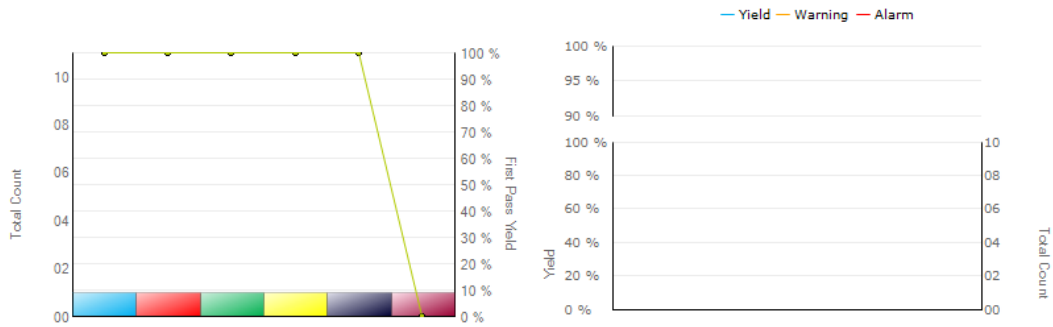


Monthly Recap | March 2014

Volume yield (top 50)

Part Number	Test Operation	Total Count	FPY	SPY	TPY
123456	Burn-In Test 2	16	0.0%	0.0%	0.0%
123456	Calibration Test	16	100.0%	100.0%	100.0%
123456	Final Function Test	16	100.0%	100.0%	100.0%
123456	ICT Test	16	100.0%	100.0%	100.0%
123456	Programming	16	100.0%	100.0%	100.0%
123456	RMA PCBA test	16	100.0%	100.0%	100.0%

Product & Test yield (top 50)



Part Number	Revision	Test Operation	SW Filename	SW Version	Total Count	Pass Count	Yield
123456	a	Calibration Test	RWS Inclinator	1	1	1	100.0%
123456	a	Final Function Test	RWS Inclinator	1	1	1	100.0%
123456	a	RMA PCBA test	RWS Inclinator	1	1	1	100.0%
123456	a	Programming	RWS Inclinator	1	1	1	100.0%
123456	a	ICT Test	RWS Inclinator	1	1	1	100.0%
123456	a	Burn-In Test 2	RWS Inclinator	1	1	0	0.0%

Repairs

Part Number	Total Count	Default	Component	Design	Manual Process	Automatic Process	No Failure Found	Replaced	Scrapped
123456	3	33%	0%	0%	0%	67%	0%	0%	0%



XYGraph MNL T step chart layover/drilldown (BETA)

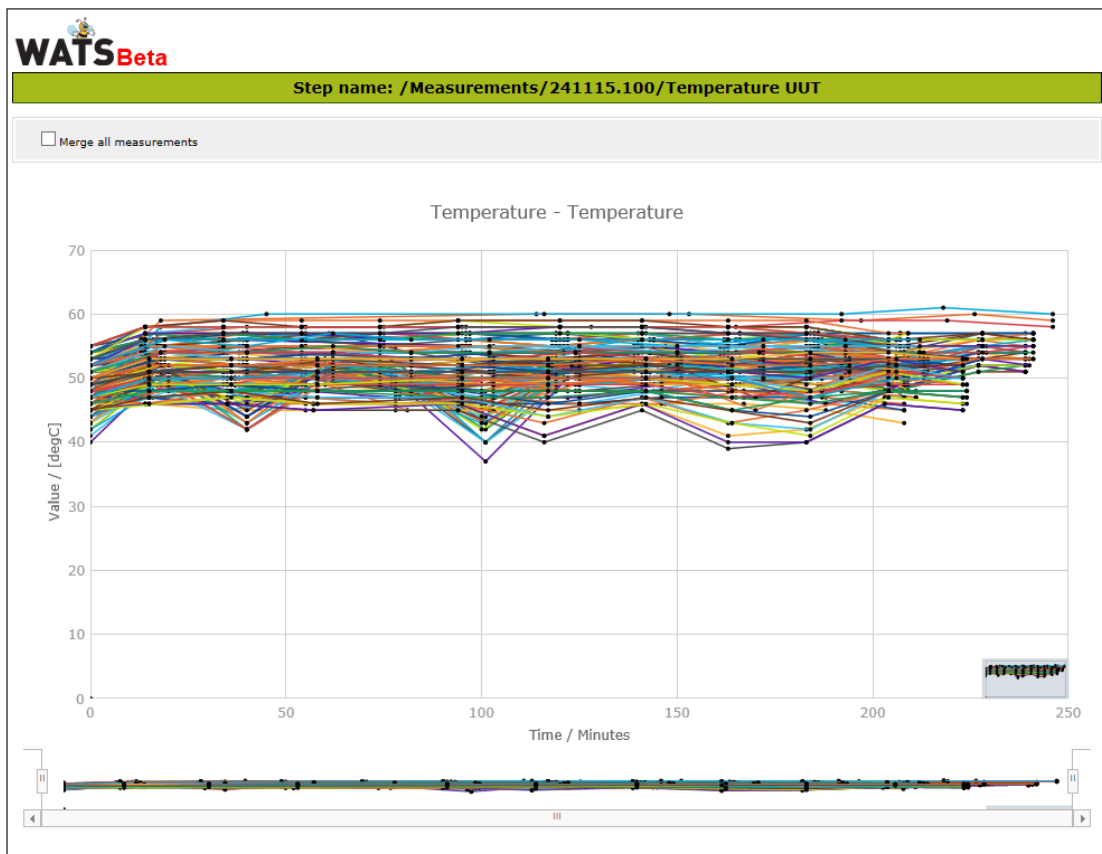
Introducing a new XYGraph MNL T step chart layover function. As a drill down from "Test Step Yield & Analysis", you can now overlay multiple graphs/plots from multiple test runs or units. Click on the "Analyse" Chart Data" button.

The screenshot shows the WATS interface for a specific step. At the top, the WATS logo is visible. Below it, a green header bar contains the text "Step name: /Measurements/241115.100/Temperature UUT". The main content area is divided into two columns of information:

Step yield:	Step Type: WATS_XYGMNLT	Avg. steptime: 0.005
Passed: 100.00% (7/7)	UTC First run: 2011-Feb-19	Max steptime: 0.022
	UTC Last run: 2011-Feb-21	Min steptime: 0.002

At the bottom of the interface, there are several controls: a dropdown menu set to "default", a "Loop iteration" checkbox, a "Merge all measurements" checkbox, a button labeled "Analyse step with GR&R", and a highlighted button labeled "Analyse Chart Data".

This will allow you to analyze the trend data of the collected graphs and plots, and not only the Measurements (KPIs).



To provide direct feedback to Virinco regarding this topic, please browse to <https://virinco.zendesk.com/entries/66473713>



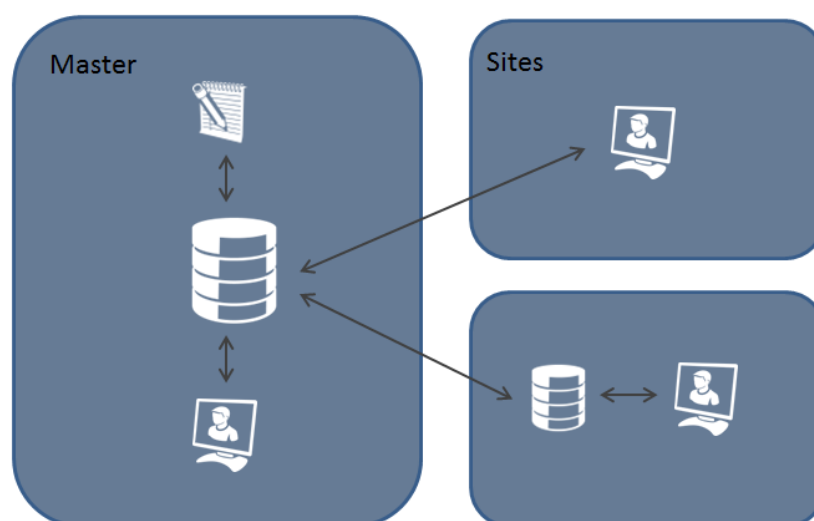
Open XYGraph step chart data in a editable view (UUT report)

This function allows you to open the collected graph/plot(s) in a new editable view (from the UUT report). Click the "Open in advanced view" button below the graph. The graph/plot(s) will be opened in the same controller as above.

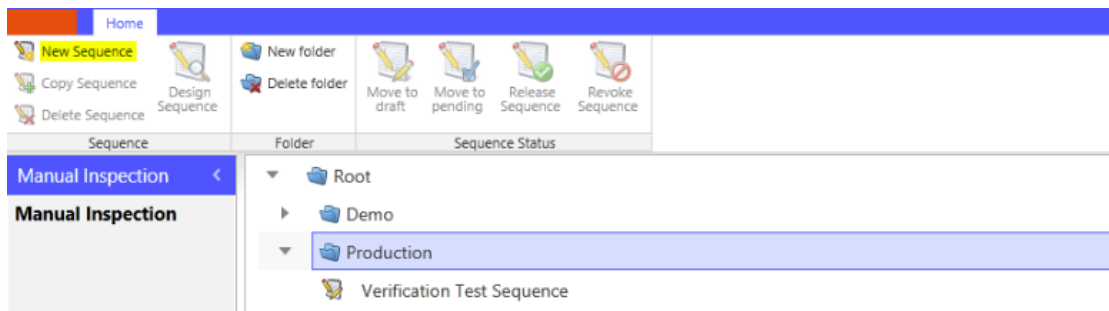
New module: Manual Inspection (BETA)

Manual Inspection (MI) is a new module in WATS. The purpose of MI is to provide an easy "off the shelf" way to create, distribute and execute test sequences used for checklists, visual inspection, manual operations, etc. and log the result(s) paperless. The output of the MI is a UUT and (optionally) a UUR report. All the standard reports and analysis (UUT report, yield, trends, etc.) can then be utilized for MI analysis and traceability.

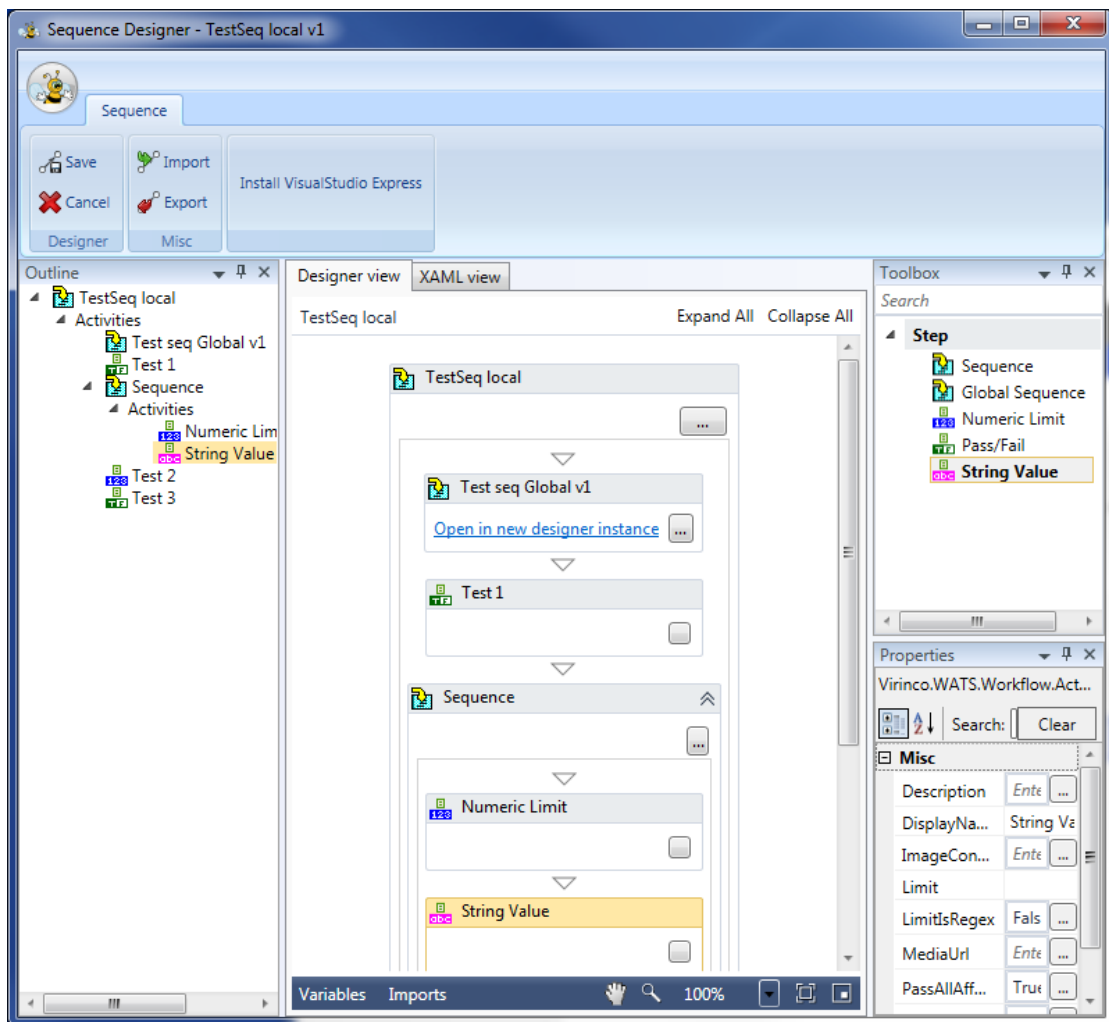
Picture below shows system setup where sequences are created and specified at the Master Server through the web based Control Panel. Operators log on to the Operator Interface and execute the sequence dependig on the Part Number of the Unit and process (Test Operation). Sequences can also be synchronized to Local Servers.



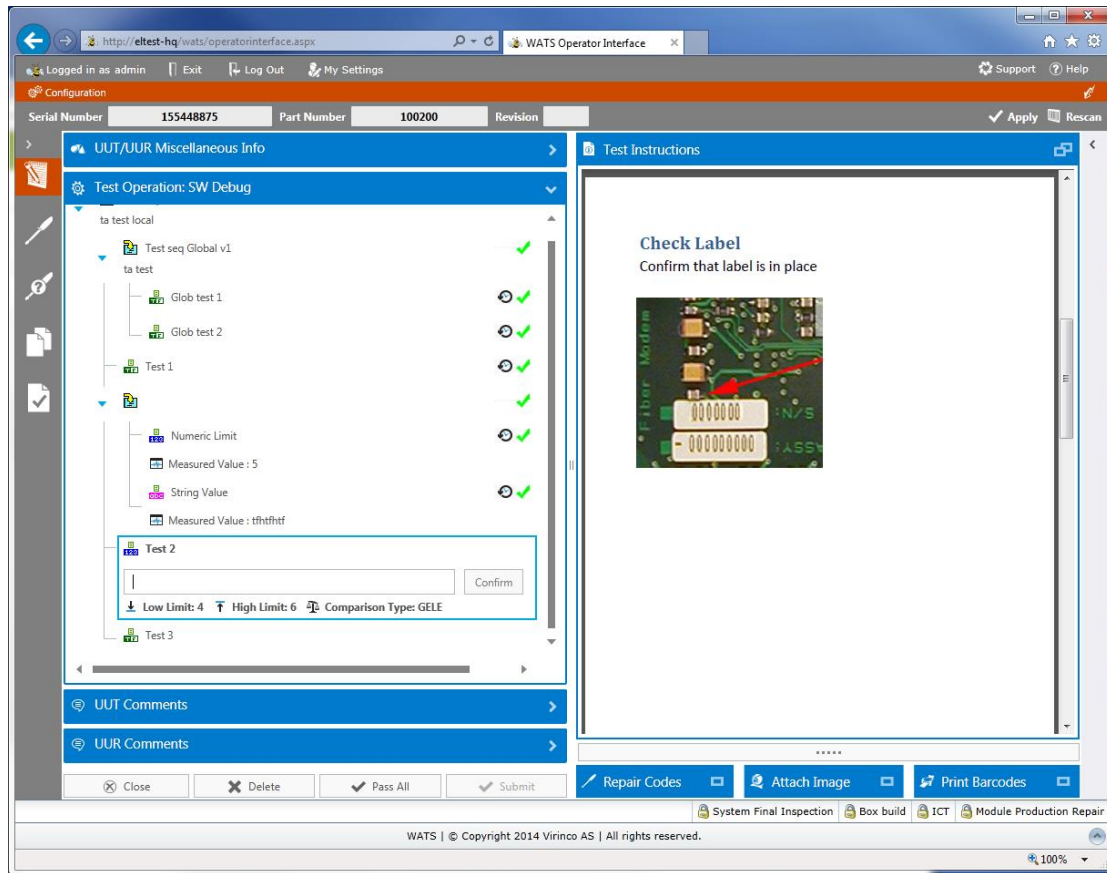
Sequences are created with the Sequence Designer located in the Control Panel. Enter the Control Panel and navigate to the Manual Inspection Manager from the left menu. To create a new test sequence, click on "New Sequence" from the ribbon, and a new sequence will appear in the selected/active folder.



To design the sequence, click "Design Sequence" from the ribbon. This will launch the Sequence Designer (see picture below).



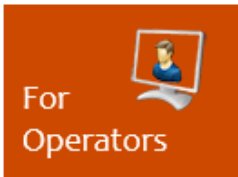
WATS Operator Interface loaded with a MI sequence:



For more information and details, please visit our Resource Center:
<https://virinco.zendesk.com/forums/23037923>



WATS Operator Interface



Unsubmitted UUR Reports

This view lists UUR reports not submitted to WATS, and is a tool for taking further action to make them available in WATS Reporting or to delete them from the server.

To access, click on the "unsubmitted UUR reports" in the left menu of the Operator Interface.

The screenshot displays the WATS Operator Interface. At the top, there is a navigation bar with options like 'Configuration', 'Serial Number', 'Part Number', and 'Revision'. Below this is a table listing 49 unsubmitted reports. The table has columns for Serial Number, Part Number, Revision, and Repair Operation. One report is highlighted in blue: Serial Number 123771146243, Part Number 754310, Revision 02, and Repair Operation Module Production. To the right of the table is a 'Repair Report' panel for the selected entry, showing details such as Serial Number, Part Number, Revision, Operator, Start Date/Time, UTC Start Date/Time, UTC Finalized Date/Time, Repair Execution Time (4.4 seconds), Repair Operation (Module Production Repair), Test Operation (Calibration), Station Data, and Comment.

Serial Number	Part Number	Revision	Repair Operation
252528	100200		Repair
112233	112233		Module Production
123456	123456		Module Production
434345456	A2	A	Module Production
4343445455	A2	DD	Module Production
123771146243	754310	02	Module Production
434344	A2	33	Module Production
081671178976	218394	1.1	Module Production
110371194167	264421	G	Repair2
43443445	PN001	REV001	Module Production
123456787	4444	4	Module Production
12345	11	1	Module Production
123456789	WATS FAT	FAT	Module Production
1234567892	WATS FAT	FAT	Module Production
123456987	11	1	Module Production
110371195106	MTSGT4K4.000	A	Module Production
112233445566	11	1	Module Production
1122334455	11	1	Module Production
4444	00-6608	1	Module Production

WATS Repair Report

Serial Number: 123771146243
 Part Number: 754310
 Revision: 02
 Operator: admin
 Start Date/Time: 2013-Jun-10 10:58:39
 UTC Start Date/Time: 2013-Jun-10 08:58:39
 UTC Finalized Date/Time:
 Repair Execution Time: 4.4 seconds
 Repair Operation: Module Production Repair
 Test Operation: Calibration
 Station Data:
 Comment:



Miscellaneous

- System sanity check.
WATS will now run a self-test on the server(s) and check server and application health. If the self-test discover any issues, it will report to the System Manager Event log (typically DB jobs, synchronization, disk space, etc.).
- Information Center
A new Information Center has been added to the web application. If critical issues are reported to the System Manager Event Log, an information bar will appear in the WATS login screen displaying a short description. Only selected (by Virinco) issues will be reported and not all issues listed in the Event log. The Information Center may also be used for important messages and maintenance information.
- PPM
Some reports now calculate PPM (Per Million Opportunities) in addition to Yield.
- Colour highlight in yield columns
Some reports now show Yield data in a colour code (Green, Orange, Red) depending on the KPI targets. To edit KPI targets, browse to *Control Panel > Configure/Settings > KPI Targets*
- New survey sub menu – Email
The email based reports are now located below the *Email* sub menu
- Miscellaneous query and database enhancements
- Bug fixes